

BUSINESS INDICATORS

**AUSTRALIAN
CAPITAL
TERRITORY**

EMBARGO: 11:30AM (CANBERRA TIME) FRI 26 OCT 2001

C O N T E N T S

page

Notes	2
Summary of findings	3
Selected business indicators	6

FEATURE ARTICLE

ACT Government Funding for Cultural Activities	8
--	---

TABLES

1 Business indicators	10
2 ACT in relation to the rest of Australia	13
3 ACT in relation to the rest of Australia, percentage changes	14

INFORMATION

Index of Feature Articles Published in ACT Business Indicators	15
--	----

- For further information about these and related statistics, contact Amanda Lilley on Canberra 02 6207 0277 or the National Information and Referral Service on 1300 135 070.

NOTES

FORTHCOMING ISSUES

ISSUE

RELEASE DATE

November 2001	29 November 2001
December 2001	2 January 2002
January 2002	31 January 2002
February 2002	28 February 2002
March 2002	28 March 2002
April 2002	26 April 2002

SYMBOLS AND OTHER USAGES

no.	number
n.a.	not available
n.p.	not available for publication
p	preliminary
qtr	quarter
'000	thousands
%	per cent
. .	not applicable
—	nil or rounded to zero

Tracy Stewart
Regional Director, Australian Capital Territory

SUMMARY OF FINDINGS

UPDATED SERIES

Series updated since the September 2001 issue are: building approvals, building commencements, business expectations, engineering construction, housing finance, industrial disputes, job vacancies, labour force, new motor vehicle registrations, population, private new capital expenditure, retail turnover, tourist accommodation, and wage and salary earners.

The feature article this month, on page 7, is ACT Government Funding for Cultural Activities.

Population The estimated resident population of the ACT increased by 900 people in the quarter ending March 2001 to 313,400 and by 2,700 people in the year ending March 2001. This corresponds to an annual growth rate of 0.8% compared with 0.6% for the previous year. In contrast the growth rate for Australia was 1.2% during the twelve months ending March quarter 2001. At March 2001, the population of the ACT made up 2% of Australia's population.

Labour force At September 2001 ACT trend employment remained stable at 166,200 people after experiencing negative growth each month from November 2000. Nationally, trend employment rose slightly by 0.1% to 9,177,700 people from August to September.

Having increased steadily during 2001, the trend estimate of unemployment has declined each month since July this year to 9,000 people in September 2001. Nationally, trend unemployment was down 0.3% from August 2001 to 670,100 people.

Likewise, the trend unemployment rate for the ACT fell slightly for the third month to 5.2%. In contrast, the national trend unemployment rate remained steady at 6.8% for the same period.

The ACT trend labour force participation rate has declined steadily during the last year from 73.4% to 71.6% in September 2001. This trend continued during the last month. The national trend has generally increased during the last year despite a monthly decrease to September 2001 of 0.1 percentage points, to 63.7%.

Industrial disputes Working days lost per thousand employees in the ACT declined from 33 days to 5 days per year from June 2000 to June 2001. The ACT lost fewer working days per thousand employees than other States and Territories except for Tasmania.

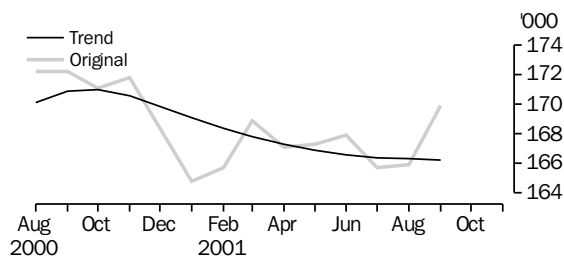
Job vacancies In August 2001 there were 3,200 job vacancies in the ACT, an increase from May 2001 but lower than the high point of 3,900 experienced in February 2000. Similarly, national job vacancies increased during the quarter ending May 2001 but were significantly lower than vacancies in 2000.

Wage and salary earners	At May 2001 the trend estimate of ACT wage and salary earners decreased from the previous quarter to 155,100. Excluding self employed employees, 55% of ACT wage and salary earners were in the private sector.
Building approvals	<p>The trend in dwelling unit approvals has grown steadily since February 2001. This trend continued in August 2001 to 193 approvals, up 3% from the previous month and up 31% from August 2000. Nationally, trend dwelling unit approvals in August 2001 rose 7% from the previous month to 14,424 dwelling units.</p> <p>The original value of non-residential building approvals for the ACT in August 2001 was \$8m, a decrease of 83% from the previous month. The original value of new residential building approvals decreased to \$20m, down 13% from the previous month.</p> <p>The original value of total building approvals in August 2001 decreased to \$33m, down 55% from the previous month and down 9% from August 2000. Nationally, the value of total building approvals in August 2001 was \$3,809m, up 16% from the previous month and up 49% from August 2000.</p>
Housing finance	In August 2001 the trend estimate of dwelling units financed (including re-financing) in the ACT was 797, which remained stable from the previous month. The trend estimate of the value of commitments was up 2% from July 2001 and up 29% from August 2000. Nationally, the trend estimate of dwelling units financed (including re-financing) during August 2001 was 55,477, up 2% from the previous month. The national trend estimate of the value of commitments in August 2001 increased 3% from the previous month.
Building Commencements	The value of new houses commenced in the ACT in the June quarter 2001 was \$38m, an increase of 7% from the previous quarter but down 36% from the June quarter 2000. Nationally, the value of new houses commenced in the June quarter 2001 was \$2,992m, up 19% from the previous quarter but down 26% from the same period last year.
Private new capital expenditure	The trend private new capital expenditure in the ACT in the June quarter 2001 was \$141m, an increase of 4% from the previous quarter and 44% from the June quarter 2000. Trend private new capital expenditure on buildings and structures increased by 9% from the previous quarter and increased by 136% from the same period in 2000. Equipment, plant and machinery expenditure rose slightly by 1% from the previous quarter. Nationally, the trend private new capital expenditure increased 1% from the previous quarter and decreased 5% from the previous year.

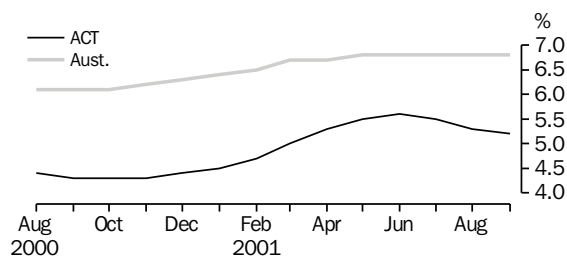
Engineering construction activity	<p>The value of public sector construction work done in the ACT during the June quarter 2001 decreased by 1% from the previous quarter and decreased 41% from the June quarter 2000. Nationally, the value of public sector work done increased by 52% from the previous quarter and increased by 4% from the June quarter 2000.</p> <p>The value of private sector engineering construction work done in the ACT during the June quarter 2001 increased by 22% from the previous quarter but decreased by 17% from the June quarter 2000. Nationally, the value of private sector engineering construction work done increased by 9% from the previous quarter and decreased by 3% from the June quarter 2000.</p>
Retail turnover	<p>The steady increase in the ACT retail turnover continued in August 2001, up 1% from the previous month to \$285m. The turnover for August 2001 was an increase of 12% from the previous year. Nationally, trend retail turnover increased 1% from the previous month and 9% from the previous year.</p>
Business expectations	<p>Trading performance (operating income) from the sales of goods and services in the ACT indicates an expected growth of 4% for the December quarter 2001. This compares to the national expectation of 1% in this period. In the medium-term (September quarter 2001 to September quarter 2002), a growth of 2% in sales is expected for the ACT, whilst the national expectation is 1%.</p>
New motor vehicle registrations	<p>In August 2001 the ACT new motor vehicle registration trend decreased 1% from the previous month but decreased 9% from the previous year. Similarly, the national trend rose 1% from the previous month but decreased 6% from the previous year.</p>
Tourist accommodation	<p>At June quarter 2001 the room occupancy rate for ACT hotels, motels, serviced apartments and guest houses was 68.6%, an increase of 9.2 percentage points from the previous quarter, and 3.9 percentage points from the June quarter 2000. Nationally, in the June quarter 2001, the room occupancy rate was 55.2%, a decrease of 2.5 percentage points from the previous quarter and down 1.9 percentage points from the June quarter 2000.</p>

SELECTED BUSINESS INDICATORS

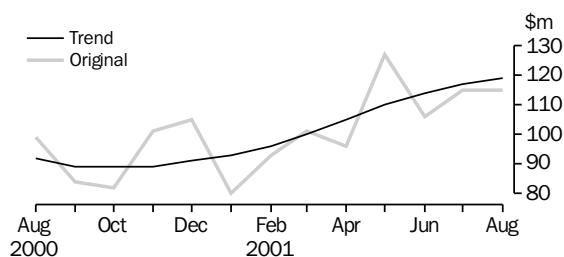
EMPLOYED PERSONS



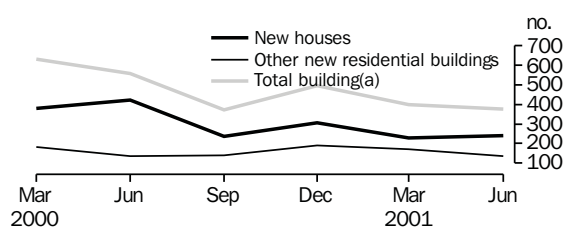
UNEMPLOYMENT RATE: trend series



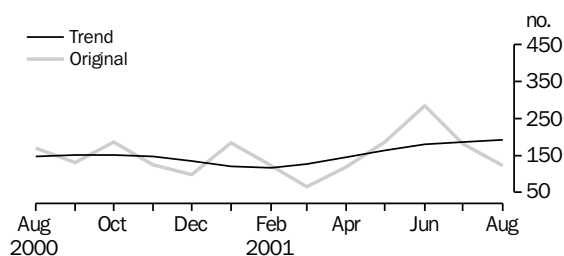
HOUSING FINANCE



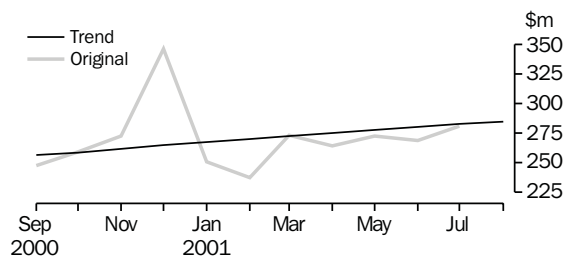
DWELLING UNITS COMMENCED



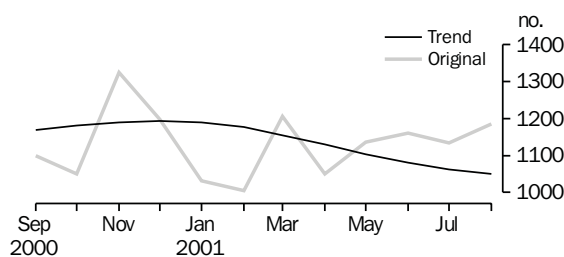
BUILDING APPROVALS: Dwelling units approved



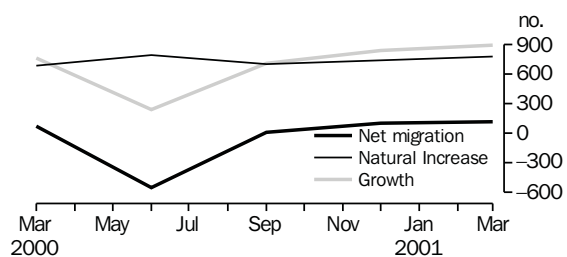
RETAIL TRADE: Monthly turnover



NEW MOTOR VEHICLE REGISTRATIONS



COMPONENTS OF POPULATION GROWTH



FEATURE ARTICLE

ACT GOVERNMENT FUNDING FOR CULTURAL ACTIVITIES

Background	<p>Governments provide funding to organisations involved in cultural activities. This funding includes direct funding of organisations (e.g. libraries), subsidies to other organisations (e.g. The National Trusts) and grants to individuals (e.g. for artists).</p> <p>The ABS annually compiles information on government cultural funding by the three levels of government: Commonwealth, State and Territory and Local governments.</p>
Destination of cultural funding	<p>In 1999–2000, one third of cultural funding from the ACT government was for libraries and archives. Another third of this funding was for national parks and wildlife services. The remaining one third of funding went to museums, art galleries, performing arts venues and centres and other cultural activities. Zoological and botanic gardens were not funded by the ACT government.</p>
Cultural funding trends	<p>ACT government cultural funding for 1999–2000 was \$32.7m (\$106 per person), up 8% from 1998–99. This increase was of a similar magnitude in the year to 1998–99. Commonwealth cultural funding increased by 12% in the year to 1999–2000, compared to no change in the year to 1998–99.</p> <p>ACT government funding for:</p> <ul style="list-style-type: none">■ libraries and archives have increased annually to a high in 1999–2000 at \$11m;■ museums peaked in 1998–99 at \$2.5m after previously being steady at \$0.5m;■ national parks and wildlife services have varied from \$8.3m in 1994–95 to, most recently, \$9.9m;■ art galleries increased from less than \$1m in 1994–95 peaking at \$2.4m in 1998–99, declining to \$1.5m in 1999–2000; and■ performing arts venues and arts centres peaked in 1996–97 at \$7.4m before declining to a low of \$1.4m in 1998–99.
State and Territory comparison	<p>Per person cultural funding from State and Territory governments varied considerably. However, this was partly a result of the administrative arrangements between the State and Territory Governments and the Local Governments. For example, zoological and botanic gardens in Queensland, unlike other States, were funded by Local Government and not the State Government. Further, the cultural sectors existing in each State and Territory varied. For example, the botanic gardens in the Australian Capital Territory (the Australian National Botanic Gardens) are funded by the Commonwealth Government.</p>

State and Territory
comparison *continued*

The Northern Territory and South Australia had the highest per person cultural funding at \$392 per person and \$136 respectively in 1999–2000. The ACT was midrange at \$106 per person, with Queensland having the lowest at \$61 per person.

STATE AND TERRITORY FUNDING FOR CULTURAL ACTIVITIES PER PERSON

	1999–2000
	\$
New South Wales	93
Victoria	80
Queensland	61
South Australia	136
Western Australia	95
Tasmania	94
Northern Territory	392
Australian Capital Territory	106

Source: ABS, Unpublished data, National Centre for Culture and Recreation Statistics.

Indicator	Unit	ACT			Aust.		
		% change from			% change from		
		Latest figure	Previous period	Same period previous year	Latest figure	Previous period	Same period previous year
POPULATION, VITALS AND LABOUR							
POPULATION, Mar qtr 01	'000	313.4	0.3	0.8	19 334.2	0.3	1.2
Natural increase	no.	776	5.1	13.1	30 239	1.1	-8.3
Net migration	no.	116	16.0	54.7	26 770	-4.6	13.0
Total growth	no.	892	6.4	17.2	57 009	-1.7	0.6
LABOUR FORCE							
Original series, Sep 01							
Employed	'000	169.9	2.4	-1.3	9 255.0	1.4	0.3
Unemployed	'000	8.0	1.3	-2.4	672.5	4.4	12.7
Unemployment rate	%	4.5	-0.1	—	6.8	0.2	0.7
Participation rate	%	72.6	1.6	-1.5	64.2	0.9	-0.1
Long-term unemployed, Aug 01	no.	1 739	-14.8	-5.5	145 846	-5.5	-12.9
Long-term unemployed as percentage of total unemployed, Aug 01	%	21.9	1.3	-3.9	22.6	-2.4	-5.3
Trend series, Sep 01							
Employed	'000	166.2	-0.1	-2.8	9 177.7	0.1	0.5
Unemployed	'000	9.0	-4.3	18.4	670.1	-0.3	13.7
Unemployment rate	%	5.2	-0.1	0.9	6.8	—	0.7
Participation rate	%	71.6	-0.2	-1.8	63.7	-0.1	—
WAGE AND SALARY EARNERS, Jun qtr 01							
Number employed, trend series							
Private sector	'000	85.4	-2.0	1.4	6 004.2	1.1	3.5
Public sector	'000	69.7	—	0.3	1 475.7	1.3	1.1
Total	'000	155.1	-1.1	0.9	7 479.9	1.2	3.0
Gross earnings, original series							
Private sector	\$m	747.0	13.1	23.1	52 387.1	5.1	9.1
Public sector	\$m	848.0	-10.6	2.8	15 658.9	-0.4	4.0
Total	\$m	1 594.9	-0.9	11.4	68 046.0	3.8	7.9
JOB VACANCIES, Aug 01	'000	3.2	28.0	6.7	92.7	11.2	-21.6
INDUSTRIAL DISPUTES IN PROGRESS, Jun 01							
Working days lost	'000	0.1	—	-75.0	66.9	107.1	5.9
Days lost per '000 employees (year ended Jun 01)	no.	5.0	-37.5	-84.8	45.0	2.3	-56.7
HOUSING AND BUILDING ACTIVITY							
HOUSING FINANCE, Aug 01							
Secured commitments to individuals for							
Original series							
Construction of dwellings	\$m	9.0	—	-18.2	1 047.0	2.9	73.3
Purchase of new dwellings	\$m	8.0	-11.1	100.0	341.0	1.8	57.9
Purchase of established dwellings(a)	\$m	99.0	2.1	17.9	6 993.0	3.5	34.1
Refinancing	\$m	21.0	16.7	61.5	1 580.0	2.8	38.8
Total housing commitments	\$m	115.0	—	16.2	8 381.0	3.4	38.9
Seasonally adjusted series							
Total housing commitments	\$m	113.0	-7.4	16.5	7 874.0	-3.3	38.6
Trend series							
Total housing commitments	\$m	119.0	1.7	29.3	8 155.0	2.6	49.0
Dwelling units financed	no.	797	-0.1	9.8	55 477	2.1	29.4
PRICE INDEX							
Established house price index, Jun qtr 01	no.	156.0	3.7	9.9	159.4	3.6	8.2
BUILDING APPROVALS, Aug 01							
Original series							
Dwelling units	no.	122	-33.0	-28.2	15 995	20.4	61.6
Value of new residential	\$m	19.5	-13.3	-15.9	2 433.6	31.6	88.0
Value of residential alterations and additions(b)	\$m	6.0	-4.8	50.0	344.4	12.3	28.3
Value of non-residential	\$m	7.9	-82.8	-16.0	1 031.4	-8.8	3.2
Value of total building	\$m	33.4	-55.3	-8.5	3 809.4	15.9	48.7
Trend series							
Dwelling units	no.	193	3.2	31.3	14 424	6.8	46.5
(a) Includes refinancing.							
(b) Includes conversion jobs.							

(a) Includes refinancing.

(b) Includes conversion jobs.

Indicator	Unit	ACT			Aust.		
		Latest figure	Previous period	% change from	Latest figure	Previous period	% change from
				Same period previous year			Same period previous year
HOUSING AND BUILDING ACTIVITY continued							
BUILDING COMMENCEMENTS, Jun qtr 01							
New houses	no.	239	3.9	-43.5	20 399	21.6	-32.0
Value of houses commenced	\$m	38.3	6.7	-36.2	2 991.6	19.3	-26.0
Value of non-residential building commenced	\$m	45.6	-28.8	-62.4	3 303.9	9.6	-4.6
Value of total commencements	\$m	114.1	-15.5	-47.2	8 606.2	10.8	-13.8
ENGINEERING CONSTRUCTION, Jun qtr 01							
Private sector							
Value of work commenced	\$m	28.6	-21.0	-44.4	2 311.3	11.2	-16.5
Value of work done	\$m	40.0	22.0	-17.2	2 805.7	8.5	-3.4
Value of work yet to be done	\$m	13.2	-50.6	-76.5	4 252.9	-7.2	-14.8
Public sector							
Value of work done	\$m	18.2	-0.5	-41.1	2 320.6	52.1	3.9
PRICES, WAGES AND CONSUMER SPENDING							
CONSUMER PRICE INDEX, Jun qtr 01(a)							
Food	no.	141.0	1.1	7.6	138.8	0.9	6.6
Housing(b)	no.	108.9	0.8	8.3	108.4	0.2	7.1
Transportation(b)	no.	142.6	2.7	4.5	139.4	2.0	5.5
All groups	no.	133.4	0.9	6.0	133.8	0.8	6.0
AVERAGE WEEKLY EARNINGS, May 01							
Full-time adult ordinary time earnings							
Original series							
Males	\$	1 007.0	-1.0	2.8	873.3	1.7	4.9
Females	\$	857.6	0.9	3.8	737.1	1.2	5.6
Persons	\$	938.8	0.6	3.0	824.1	1.7	5.3
Trend series							
Males	\$	1 015.6	0.1	3.4	871.4	1.2	4.3
Females	\$	858.5	0.8	3.8	737.0	1.2	5.3
Persons	\$	939.5	0.4	3.1	822.3	1.2	4.7
WAGE COST INDEX, Jun qtr 01(c)							
Public sector	no.	110.3	0.3	3.5	113.3	0.6	3.8
Private sector	no.	112.1	0.4	4.0	112.1	0.6	3.7
Total	no.	111.0	0.4	3.7	112.4	0.6	3.7
RETAIL TURNOVER, Aug 01							
Trend series							
Food retailing	\$m	105.7	1.1	11.7	5 416.4	0.4	7.6
Department stores	\$m	27.2	—	2.6	1 115.9	-0.2	1.0
Hospitality and services	\$m	50.1	0.4	23.7	2 469.3	1.1	10.6
All other retailing	\$m	102.0	0.9	9.6	4 666.1	0.6	10.4
Total	\$m	285.0	0.8	11.9	13 667.7	0.5	8.5

(a) Base year: 1989-90 = 100.0.

(b) The 14th Series Australian Consumer Price Index was introduced September quarter 2000. Some changes include an updated commodity classification and weighting pattern and changes in composition of some groups. For more details of changes, refer to *Information Paper: Introduction of the 14th Series Australian Consumer Price Index* (Cat. no. 6456.0) released 29 September 2000.

(c) Base of each index is September quarter 1997 = 100.0.

Indicator	Unit	ACT			Aust.		
		% change from			% change from		
		Latest figure	Previous period	Same period previous year	Latest figure	Previous period	Same period previous year
TOURIST ACCOMMODATION, Jun qtr 01							
Original series							
Room nights occupied	'000	318.7	19.1	7.5	9 872.9	-3.1	-1.3
Room occupancy rate	%	68.6	9.2	3.9	55.2	-2.5	-1.9
Guest nights	'000	554.8	22.0	14.0	17 351.8	-6.0	-0.1
Guest arrivals	'000	242.6	15.9	8.9	7 843.2	-2.3	—
Takings from accommodation	\$'000	37 062.0	25.8	23.2	1 111 337.0	-6.8	6.9
NEW MOTOR VEHICLE REGISTRATIONS, Aug 01							
Original series	no.	1 186	4.6	-9.6	66 844	-2.3	-12.5
Seasonally adjusted series	no.	1 049	-4.5	-9.8	65 241	-2.3	-12.4
Trend series	no.	1 050	-1.0	-8.7	64 289	1.1	-5.5
STATE ACCOUNTS, Jun qtr 01							
Trend series (chain volume measure)(a)							
General government final consumption expenditure	\$m	2 519	-0.4	-1.3	30 725	0.8	2.2
Household final consumption expenditure	\$m	1 867	0.7	3.5	97 700	1.1	3.4
Private gross fixed capital formation	\$m	371	4.5	-6.5	27 113	-0.2	-10.5
Public gross fixed capital formation	\$m	235	10.3	15.8	6 557	-1.3	-3.0
State final demand	\$m	4 988	0.7	0.4	162 043	0.7	0.3
GROSS STATE PRODUCT (trend, chain volume measures), 1999-00(b)							
	\$m	12 669	4.9	..	620 963	4.3	.
PRIVATE NEW CAPITAL EXPENDITURE, Jun qtr 01							
Original series (at current prices)							
Buildings and structures	\$m	69	46.8	187.5	2 651	36.7	-17.9
Equipment, plant and machinery	\$m	77	-10.5	-10.5	7 692	12.5	-5.4
Total	\$m	146	9.8	32.7	10 343	17.9	-9.0
Trend series (at current prices)							
Buildings and structures	\$m	59	9.3	136.0	2 463	5.5	-12.4
Equipment, plant and machinery	\$m	82	1.2	12.3	7 313	-1.0	-2.8
Total	\$m	141	4.4	43.9	9 776	0.6	-5.4
BUSINESS EXPECTATIONS, TRADING PERFORMANCE, OPERATING INCOME							
Short term, expected change previous quarter, Dec qtr 01	%	4.1	1.3
Medium term, expected change previous year, Sep qtr 02	%	2.0	0.9

(a) Reference year for chain volume measures is 1999-00.

(b) Reference year for chain volume measures is 1998-99.

Source: Australian Demographic Statistics (Cat. no. 3101.0); National Income, Expenditure and Product, Australian National Accounts (Cat. no. 5206); Average Weekly Earnings, States and Australia (Cat. no. 6302.0); Building Activity, Australia (Cat. no. 8752.0); Building Approvals, Australia (Cat. no. 8731.0); Consumer Price Index (Cat. no. 6401.0); Housing Finance, Australia (Cat. no. 5609.0); House Price Indexes (Cat. no. 6416.0); Industrial Disputes, Australia (Cat. no. 6321.0); Job Vacancies, Australia (Cat. no. 6354.0); Labour Force, Australia, Preliminary (Cat. no. 6202.0); New Motor Vehicle Registrations, Australia Preliminary (Cat. no. 9301.0); Private New Capital Expenditure, State Estimates (Cat. no. 5646.0); Retail Trade, Australia (Cat. no. 8501.0); Tourist Accommodation, Australia (Cat. no. 8635.0); Wage Cost Index, Australia (Cat. no. 6345.0).

Indicator	Unit	Latest period	NSW	Vic.	Qld	SA	WA	Tas.	NT	ACT	Aust.
POPULATION	'000	Mar qtr 01	6 516.6	4 816.1	3 612.3	1 501.4	1 904.1	470.3	196.9	313.4	19 334.2
LABOUR FORCE, trend series											
Employed persons	'000	Sep 01	3 071.7	2 318.7	1 712.4	676.7	936.7	197.6	98.6	166.2	9 177.7
Unemployment rate	%	Sep 01	6.1	6.2	8.1	7.4	7.1	9.5	7.3	5.2	6.8
WAGE AND SALARY EARNERS, trend series											
Private sector	'000	Mar qtr 01	1 935.1	1 627.9	1 050.1	423.7	619.1	118.9	53.9	85.4	6 004.2
Public sector	'000	Mar qtr 01	459.6	305.5	291.9	111.7	150.8	40.9	22.7	69.7	1 475.7
Total	'000	Mar qtr 01	2 394.7	1 933.4	1 342.0	535.4	769.9	159.8	76.6	155.1	7 479.9
STATE ACCOUNTS											
Gross state product (chain volume measures)(a)	\$m	1999-00	221 375	157 915	103 691	41 381	66 525	11 367	6 466	12 669	620 963
PRIVATE NEW CAPITAL EXPENDITURE											
Total (at current prices), trend series	\$m	Jun qtr 01	3 238	2 548	1 370	590	1 439	123	284	141	9 776
BUILDING APPROVALS											
Dwelling units approved, original series	no.	Aug 01	4 042	5 691	3 234	825	1 857	149	75	122	15 995
Dwelling units approved, trend series	no.	Aug 01	3 607	4 335	3 003	824	1 808	155	114	193	14 424
Value of non-residential building approved, original series	\$m	Aug 01	347.0	298.9	144.5	118.4	93.5	11.3	10.0	7.9	1 031.4
Value of all buildings approved, original series	\$m	Aug 01	1 097.1	1 485.0	576.1	221.7	341.6	32.4	22.2	33.4	3 809.4
ENGINEERING CONSTRUCTION, original series											
Value of engineering construction work done	\$m	Jun qtr 01	1 734.3	876.1	1 286.9	366.6	661.7	94.9	47.5	58.2	5 126.2
AVERAGE WEEKLY EARNINGS, trend series											
Full-time adult ordinary time earnings	\$	Feb 01	844.8	790.0	762.4	772.8	828.7	738.1	811.9	939.5	822.3
RETAIL TRADE TURNOVER, trend series	\$m	Aug 01	4 705.0	3 316.1	2 549.5	1 030.2	1 346.0	288.6	141.2	285.0	13 667.7
TOURIST ACCOMMODATION, original series											
Room nights occupied	'000	Jun qtr 01	3 223.7	1 619.6	2 720.6	521.9	903.1	227.3	337.9	318.7	9 872.9
Room occupancy rate	%	Jun qtr 01	54.1	55.1	57.2	54.1	52.1	45.6	59.5	68.6	55.2
NEW MOTOR VEHICLE REGISTRATIONS, trend series	no.	Aug 01	21 202	17 734	12 706	4 101	5 801	1 142	553	1 050	64 289
	Unit	Latest period	Syd.	Melb.	Bris.	Adel.	Perth	Hob.	Dar.	Canb.	Aust.
CONSUMER PRICE INDEX(b)											
Food	no.	Jun qtr 01	139.3	138.8	138.5	139.4	138.1	136.0	137.0	141.0	138.8
Housing	no.	Jun qtr 01	117.1	98.8	112.6	104.9	101.6	107.2	122.4	108.9	108.4
Transportation	no.	Jun qtr 01	140.8	138.6	137.3	140.4	139.6	134.6	135.4	142.6	139.4
All Groups	no.	Jun qtr 01	135.0	133.0	134.0	135.1	131.4	133.4	132.2	133.4	133.8
AVERAGE RETAIL PRICES											
Milk, supermarket sales (1 litre)	cents	Jun qtr 01	135	145	141	136	146	131	151	128	..
Bread, white loaf, sliced, supermarket sales (650g)(c)	cents	Jun qtr 01	250	258	242	238	240	260	248	246	..
Beef, rump steak (1kg)	cents	Jun qtr 01	1 448	1 388	1 302	1 409	1 334	1 222	1 350	1 398	..
Chicken, frozen (1kg)	cents	Jun qtr 01	333	341	320	342	386	401	424	353	..
Potatoes (1kg)	cents	Jun qtr 01	133	205	165	111	153	107	167	145	..
Coffee, instant (150g jar)	cents	Jun qtr 01	635	635	613	582	678	691	631	644	..
Scotch nip, public bar (30ml)	cents	Jun qtr 01	386	373	320	409	422	315	376	325	..
Private motoring petrol (1 litre)											
Super grade(d)	cents	Jun qtr 01	97.5	94.8	87.1	98.0	97.0	100.1	106.4	100.8	..
Unleaded	cents	Jun qtr 01	94.3	91.7	84.0	95.0	93.9	97.4	103.5	97.8	..

(a) Experimental series. Users are cautioned these estimates are derived indirectly by calculating a deflator from the expenditure components of the state series concerned. Therefore, in general, the sum of the state estimates does not equal the estimates for Australia. Reference year for chain volume measures is 1998-99.

(b) Base year: 1989-90 = 100.0. The 14th Series Australian Consumer Price Index was introduced September quarter 2000. Some changes include an updated commodity classification and weighting pattern and changes in composition of some groups. For more details of changes, refer to *Information Paper: Introduction of the 14th Series Australian Consumer Price Index* (Cat. no. 6456.0) released 29 September 2000.

(c) 680g in Hobart and Darwin.

(d) Includes lead replacement petrol where applicable.

Indicator	Latest period	NSW	Vic.	Qld	SA	WA	Tas.	NT	ACT	Aust.
POPULATION	Mar qtr 01	0.2	0.4	0.4	0.1	0.4	—	0.3	0.3	0.3
LABOUR FORCE, trend series										
Employed persons	Sep 01	—	0.1	0.1	0.1	—	0.1	0.2	-0.1	0.1
Unemployment rate	Sep 01	—	-0.1	-0.1	-0.1	-0.1	0.2	—	-0.1	—
WAGE AND SALARY EARNERS, trend series										
Private sector	Mar qtr 01	-1.1	1.8	1.4	-0.5	2.7	2.7	-2.0	-2.0	1.1
Public sector	Mar qtr 01	-0.4	0.3	-0.3	-0.6	1.4	0.5	1.8	—	1.3
Total	Mar qtr 01	-0.9	1.6	1.0	-0.5	2.4	2.1	-0.9	-1.1	1.2
STATE ACCOUNTS										
Gross state product (chain volume measures)(a)	1999-00	3.7	4.6	6.3	3.5	4.6	1.1	—	4.9	4.3
PRIVATE NEW CAPITAL EXPENDITURE										
Total (at current prices), trend series	Jun qtr 01	-3.7	1.6	-2.7	-9.4	7.2	-2.4	32.7	4.4	0.6
BUILDING APPROVALS										
Dwelling units approved, original series	Aug 01	4.9	52.7	25.0	-15.4	6.4	26.3	-20.2	-33.0	20.4
Dwelling units approved, trend series	Aug 01	5.1	8.2	6.2	6.7	6.9	6.2	—	3.2	6.8
Value of non-residential building approved, original series	Aug 01	-27.7	3.4	-23.3	158.0	46.6	14.1	28.2	-82.8	-8.8
Value of all buildings approved, original series	Aug 01	-7.6	57.6	1.3	38.5	11.3	22.7	-0.9	-55.3	15.9
ENGINEERING CONSTRUCTION, original series										
Value of engineering construction work done	Jun qtr 01	32.2	6.1	26.4	50.4	19.5	26.4	48.0	13.9	24.7
AVERAGE WEEKLY EARNINGS, trend series										
Full-time adult ordinary time earnings	Feb 01	0.5	0.9	1.1	1.7	1.0	-0.3	0.4	0.4	1.2
RETAIL TRADE TURNOVER, trend series	Aug 01	0.5	0.5	0.2	1.0	0.8	-0.4	0.7	0.8	0.5
TOURIST ACCOMMODATION, original series										
Room nights occupied	Jun qtr 01	-5.8	-9.4	3.2	-4.6	-4.2	-32.2	33.8	19.1	-3.1
Room occupancy rate	Jun qtr 01	-3.8	-7.0	1.3	-4.3	-2.3	-22.6	14.6	9.2	-2.5
NEW MOTOR VEHICLE REGISTRATIONS, trend series	Aug 01	1.0	1.0	1.7	1.0	1.1	-1.6	-2.0	-1.0	1.1
	Latest period	Syd.	Melb.	Bris.	Adel.	Perth	Hob.	Dar.	Canb.	Aust.
CONSUMER PRICE INDEX(b)										
Food	Jun qtr 01	0.1	1.5	1.0	—	2.1	1.3	1.6	1.1	0.9
Housing	Jun qtr 01	0.5	-0.3	-0.2	0.5	0.5	0.3	-0.7	0.8	0.2
Transportation	Jun qtr 01	1.7	1.8	2.1	2.5	2.6	2.4	2.7	2.7	2.0
All Groups	Jun qtr 01	0.7	0.6	1.0	0.7	1.4	1.0	1.1	0.9	0.8
AVERAGE RETAIL PRICES										
Milk, carton, supermarket sales	Jun qtr 01	—	—	—	0.7	2.1	4.0	—	1.6	..
Bread, white loaf, sliced, supermarket sales	Jun qtr 01	1.2	0.8	3.4	2.6	2.1	3.6	5.1	0.4	..
Beef, rump steak	Jun qtr 01	9.9	15.6	11.9	9.3	6.5	5.9	10.7	4.6	..
Chicken, frozen	Jun qtr 01	-10.7	-9.5	-5.3	-10.9	4.6	8.4	2.9	-8.1	..
Potatoes	Jun qtr 01	4.7	28.1	11.5	19.4	—	-14.4	18.4	5.8	..
Coffee, instant (jar)	Jun qtr 01	4.6	4.6	11.5	—	-0.3	-0.4	7.7	4.2	..
Scotch nip, public bar	Jun qtr 01	1.3	1.4	0.9	2.3	0.7	1.0	—	1.2	..
Private motoring petrol										
Super grade(c)	Jun qtr 01	3.2	1.2	4.6	4.9	4.3	3.4	4.6	3.6	..
Unleaded	Jun qtr 01	3.3	1.2	4.7	5.1	4.4	3.5	5.0	3.7	..

(a) Experimental series. Users are cautioned these estimates are derived indirectly by calculating a deflator from the expenditure components of the state series concerned. Therefore, in general, the sum of the state estimates does not equal the estimates for Australia. Reference year for chain volume measures is 1998-99.

(b) Base year: 1989-90 = 100.0. The 14th Series Australian Consumer Price Index was introduced September quarter 2000. Some changes include an updated commodity classification and weighting pattern and changes in composition of some groups. For more details of changes, refer to *Information Paper: Introduction of the 14th Series Australian Consumer Price Index* (Cat. no. 6456.0) released 29 September 2000.

(c) Includes lead replacement petrol where applicable.

INDEX OF FEATURE ARTICLES PUBLISHED IN ACT BUSINESS INDICATORS

<i>Issue</i>	<i>Title</i>	<i>Page reference</i>
Oct 2001	ACT Government Funding for Cultural Activities	7
Sep 2001	Volunteers in the ACT	7
Aug 2001	Business Use of Information Technology (IT)	7
Jul 2001	Motor Vehicle Use in the ACT	7
Jun 2001	Cleaning Services Industry in the ACT	7
May 2001	Working Arrangements and Superannuation in the ACT	6
Apr 2001	Job Search Experience of Unemployed Persons in the ACT	7
Mar 2001	Population Growth in the ACT	6
Feb 2001	Labour Mobility in the ACT	7
Jan 2001	Child Care Industry in the ACT	7
Dec 2000	Cafes and Restaurants Industry in the ACT	6
Dec 2000	Legal Services Industry in the ACT	8
Nov 2000	Manufacturing Industry in the ACT	6
Oct 2000	Computing Services Industry 1998–99	6
Sep 2000	Motor Vehicle Use in the ACT	6
Aug 2000	Household Expenditure on Goods and Services in the ACT	6
Jul 2000	Small Business in the ACT	6
Jun 2000	Sports Attendance	7
Jun 2000	Attendance at Selected Cultural Venues	8
May 2000	Employee Earnings, Benefits and Trade Union Membership	7
Apr 2000	Emergency Services and Public Transport Usage in the ACT	8
Mar 2000	Forms of Employment	6
Feb 2000	Job Search Experience of Unemployed Persons	6
Jan 2000	Transition from Education to Work, May 1999	6
Dec 1999	Structure of the ACT Economy	6
Dec 1999	Participation in Sport and Physical Activities	7
Nov 1999	Crime and Safety in the ACT	6
Oct 1999	Labour Force Experience in the ACT	6
Sep 1999	Career Experience in the ACT	7
Sep 1999	Carers in the ACT	9
Aug 1999	Stock of Human Resources in Science and Technology	6
Jul 1999	Persons with a Disability in the ACT	6
Jun 1999	Participation in Education in the ACT	6
May 1999	Transition from Education to Work of Persons Aged 15-64 in the ACT	7
Apr 1999	Persons Not in the Labour Force in the ACT	6
Mar 1999	Education and Labour Force Status of the ACT's Young People	6
Feb 1999	Income and Living Standards in the ACT	6
Jan 1999	Education and Training Experience of ACT Resident	6
Dec 1998	Families and Labour Force Status in the ACT	6
Nov 1998	Retrenchment and Redundancy in the ACT	6
Nov 1998	Retail Turnover in the ACT	9
Oct 1998	Research and Experimental Development in the ACT	6
Sep 1998	Labour Force Mobility in the ACT	6
Sep 1998	Income Distribution in the ACT	8

FOR MORE INFORMATION...

- INTERNET** www.abs.gov.au the ABS web site is the best place to start for access to summary data from our latest publications, information about the ABS, advice about upcoming releases, our catalogue, and Australia Now—a statistical profile.
- LIBRARY** A range of ABS publications is available from public and tertiary libraries Australia-wide. Contact your nearest library to determine whether it has the ABS statistics you require, or visit our web site for a list of libraries.
- CPI INFOLINE** For current and historical Consumer Price Index data, call 1902 981 074 (call cost 77c per minute).
- DIAL-A-STATISTIC** For the latest figures for National Accounts, Balance of Payments, Labour Force, Average Weekly Earnings, Estimated Resident Population and the Consumer Price Index call 1900 986 400 (call cost 77c per minute).

INFORMATION SERVICE

Data which have been published and can be provided within five minutes are free of charge. Our information consultants can also help you to access the full range of ABS information—ABS user-pays services can be tailored to your needs, time frame and budget. Publications may be purchased. Specialists are on hand to help you with analytical or methodological advice.

- PHONE** **1300 135 070**
- EMAIL** **client.services@abs.gov.au**
- FAX** 1300 135 211
- POST** Client Services, ABS, GPO Box 796, Sydney 1041

WHY NOT SUBSCRIBE?

ABS subscription services provide regular, convenient and prompt deliveries of ABS publications and products as they are released. Email delivery of monthly and quarterly publications is available.

- PHONE** 1300 366 323
- EMAIL** subscriptions@abs.gov.au
- FAX** 03 9615 7848
- POST** Subscription Services, ABS, GPO Box 2796Y, Melbourne 3001



2130380010011
ISSN 1320-808X

RRP \$17.50